

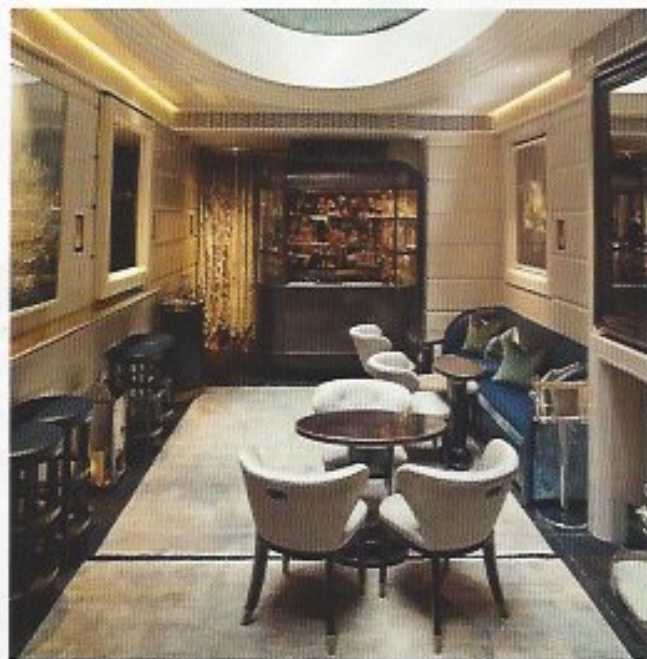
DEPARTURE INFO

Wien-side dining, a snug London bar, and farm stays down under

Panel show

STEIRERECK, VIENNA →

Gourmets prize Steirereck as much for the fin de siècle charm of its art nouveau dining room as for chef Heinz Reitbauer's mod-Austrian menu (think mountain trout seasoned with lime salt, and char cooked in hot beeswax), but it was beginning to feel a little cramped. A recent extension by local architects PPAG comprises a series of metal and glass pavilions, with panels that rise vertically to open up the dining room to the park, while inside, curved timber screens section off clusters of tables. **Daven Wu**
Am Heumarkt 2A, tel: 43 713 31 68, steirereck.at



Small miracle

CHAMPAGNE ROOM, CONNAUGHT, LONDON →

With the launch of its beautifully bijou Champagne Room, the Connaught in Mayfair stylishly affirms its status as one of London's most prestigious hotels. Accessed via a velvet curtain, this intimate space, crafted by interior designer Guy Oliver, features a palette of neutral shades and lavish blue undertones, a splendid limestone floor, and plenty of tactile leather and lustrous brass. Meanwhile, the tiny room is illuminated by a large skylight, graced by a life-size bronze sculpture of a diver in motion by artist Sophie Dickens. A selection of seductive cocktails is on offer, but for the full VIP experience, we recommend perusing the list of 40 vintage champagnes, served, naturally, in Baccarat crystal glassware. This is a true hidden gem of London's booming bar scene. **Lauren Ho**
Carlos Place, Mayfair, tel: 44 20 7499 7070, the-connaught.co.uk

■ PARK LIFE

Now located in Vienna's Stadtpark, on the banks of the Wien, Steirereck (above) was first set up in 1970 by chef Heinz Reitbauer's parents

■ SPARKLING GEMS

The formidable list at the Connaught's Champagne Room (left) includes a 1964 Krug, a 1979 Clos du Mesnil Krug, and a 1914 Pol Roger

■ SLUMBER PARTY

Scrubby Bay (below) features three ocean-front bedroom suites, a bunk room that sleeps eight, and four bathrooms

Bay route

SCRUBBY BAY, NEW ZEALAND →

The 4,000-acre Annandale estate, an hour's drive south of Christchurch, ticks all our boxes for an old-fashioned yet luxurious getaway. Located on the Banks Peninsula, overlooking the Pacific Ocean, it comprises five properties, including the newly opened Scrubby Bay. Accommodating 14 guests, the secluded cedar-clad villa stretches out along the beach and includes a deck warmed by an open firepit, and an outdoor spa. Arrival is either by helicopter or a panoramic drive along cliff-top tracks. Roughing it has never been so comfortable. **DW**
Pigeon Bay, tel: 64 3 304 6841, annandale.com. Rates: from NZ\$3,680 (\$2,845)

